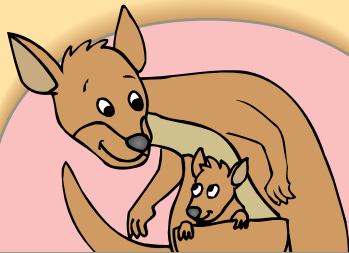




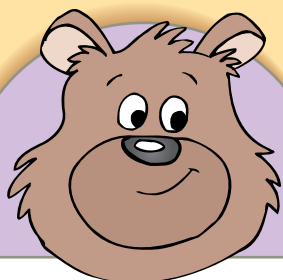
1	Beginning and Ending Consonants	4
2	Medial Consonants	8
3	Short Vowels	12
4	Long Vowels	16
5	"Y" as a Vowel	20
6	Hard and Soft "C"	24
7	Hard and Soft "G"	28
8	Consonant Blends	32
9	More Consonant Blends	36
10	Vowel Pairs "OO" and "EW"	40
11	Consonant Digraphs "CH" and "SH"	44
12	Consonant Digraphs "TH" and "WH"	48
	<b>Review 1</b>	52
13	Consonant Digraph "NG"	58
14	Vowel Diphthongs "OY" and "OI"	62
15	Vowel Diphthongs "OU" and "OW"	66
16	Vowel Pairs "AU" and "AW"	70
17	"R" Controlled Vowels "OR" and "AR"	74
18	"R" Controlled Vowels "ER", "IR", and "UR"	78
19	Long Vowel Digraphs "AY", "AI", and "EI"	82
20	Long Vowel Digraphs "EE" and "EA"	86
21	Long Vowel Digraphs "OA" and "OW"	90
22	Silent Consonants	94
23	Homographs	98
24	Homophones	102
	<b>Review 2</b>	106
	<b>Phonics Playground</b>	113
	<b>Answers</b>	121

# Beginning and Ending Consonants

A. Write the beginning letter of each animal.



1. \_\_\_ angaroo



2. \_\_\_ ear



4. \_\_\_ orse



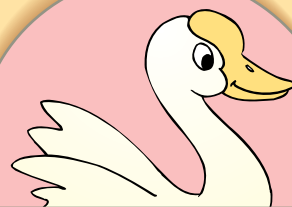
3. \_\_\_ ebra



5. \_\_\_ onkey



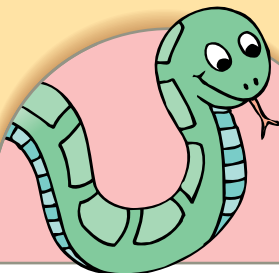
6. \_\_\_ ak



7. \_\_\_ oose



8. \_\_\_ ouse

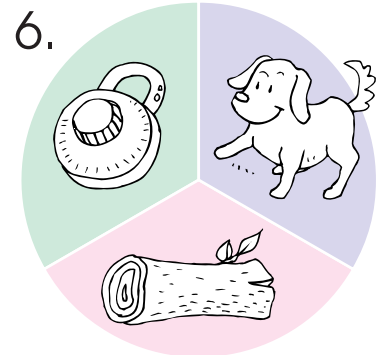
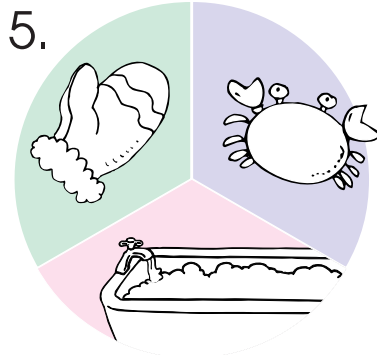
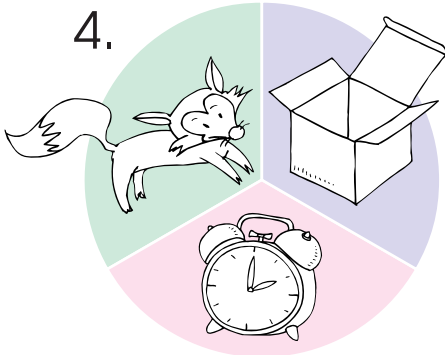
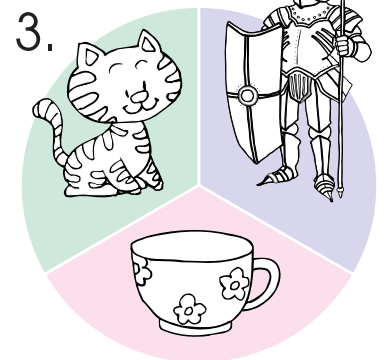
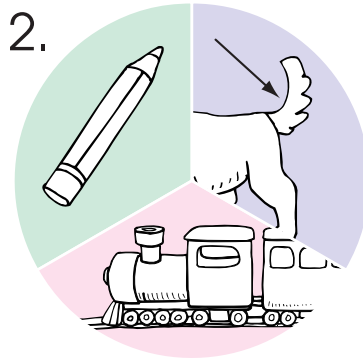
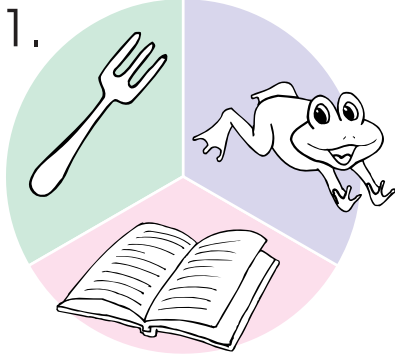


9. \_\_\_ nake



10. \_\_\_ ox

**B. Colour the two that have the same ending sound.**

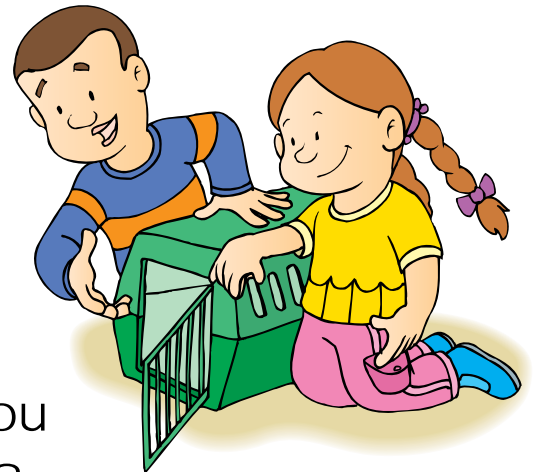


**C. Fill in the missing consonants to finish the poem.**



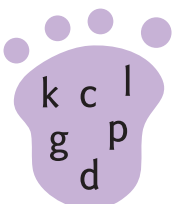
Angus and Erin want  
a    e   .

What kind of    e    do you  
think they should    e   ?



A    io   ? No. A    io    would    oa   .

A    ippopotamu   ? No. It would fall through  
the    loo   .



A shar   ? No. A shar    needs a    oo   .

A    o   ? Yes! A    o    would be    oo   .